

RIDGE REPORTER

Newsletter of the Inverness Ridge Association

November 2015

invernessridgeassoc.com

MESSAGE FROM IRA PRESIDENT

Susan Fisher

Fire safety in Inverness Ridge communities is most definitely the topic of the hour. The drought, unseasonably warm weather, and the widespread pitch pine fungus affecting the Bishop Pines that surround us have combined to make all of us even more aware of the very real danger of fire.

Members of IRA and our Road Board are working with both Marin Fire and the National Park to improve fire safety in PRE, insure that all residents are aware of evacuation routes in case of fire, and know what to do to make their own properties as fire safe as possible. Marin Fire has committed to helping trim vegetation along the Sunnyside right of way to improve safety on the road. The National Park has pledged to continue work it began recently at the top of Drakes View Drive to reduce combustible material along boundaries it shares with PRE properties.

Evacuation routes, in addition to Drakes View Drive, include **the Park fire road** accessed from the top of Sunnyside leading to the Limantour Road. **Combination locks on the Park gates at either end of the road are set to open using a 0911 combination.** If fire equipment is using Drakes View Drive or it is otherwise unusable there are **two drivable emergency exits located on private property, one at #7 Douglas, and one at the end of Douglas (begins left of #100 Douglas).**

The Inverness Ridge Association and PRERAB websites have been updated and revised. Check it out at Invernessridgeassoc.com. Here you will find contact numbers for the IRA Board, the PRERAB board, local emergency personnel, and our neighborhood liaisons, as well as the updated emergency escape route map and other helpful resources and links.

(President's message cont'd on Page 2)

JOIN NEXTDOOR PRE (Paradise Ranch Estates)

Nextdoor PRE is growing and now has 100+ members. One member coined it the neighborhood walkie-talkie and it helps neighbors who have too much of something, with recommendations for services, and staying in touch. If you would like to join **Nextdoor PRE** ask any neighbor who is a member to invite you. It also helps if that neighbor can vouch that you are within the boundaries of PRE by emailing help@nextdoor.com when they invite you.



Fox Very Much at Home. Marna Clarke

DUES: Thank you to the many households who have already paid their 2015 IRA dues. So many of you have provided support through the years by writing that annual \$25.00 check at the January Annual IRA Meeting. We consistently have over 100 households join each year. ***If you haven't sent your check yet, please send to: P.O. Box 342, Inverness, CA 94937***

(President's message cont'd from Page 1)

Fire Safe Practices for Homeowners include, at a minimum, keeping dry grass cut to 3" high or less, pruning trees within 30 feet of structures so the lowest limbs are 6' to 10' from the ground, keeping roofs and gutters clear of pine needles and other combustible material, and keeping firewood stacks and dry vegetation away from structures.

Additional suggestions, including fire safe landscaping recommendations, may be found at www.FireSafeMarin.org.

Informing tenants and weekend guests of safety information, emergency contact numbers and evacuation routes is the responsibility of every homeowner.

At the end of this newsletter (and on our website) is a **list of important emergency telephone numbers and the escape route map. Please print it out and make sure that it is posted where you, and your guests, tenants, or visiting workers can readily find it if needed.**

Some residents have reported seeing cigarette butts along PRE roads and trails. **We are planning to post signs warning of the high fire danger and inappropriateness of open fires and smoking in the neighborhood.** You can help by making visitors aware of these restrictions.

Thank you for your help. We are pleased that both Marin Fire and the National Park have pledged to work with us to make PRE as fire safe as possible. Many of our neighbors have joined in the effort this year, working to make their own properties less vulnerable to fire, and just as important, reaching out to their neighbors to work with them to accomplish mutual trimming and vegetation clearing goals. The more of us who join this effort the better prepared we will be.

**SAVE THE DATE
IRA ANNUAL MEETING**

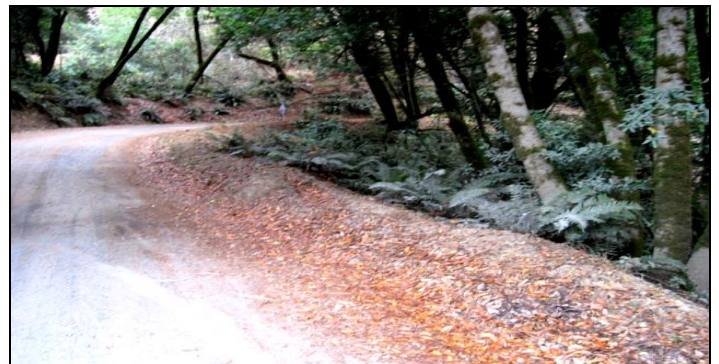
SATURDAY, JANUARY 23, 2015

**UPDATE: PARADISE RANCH ESTATES
ROAD ADVISORY BOARD (PRERAB)
JOHN LEVY, CHAIR OF PRERAB**

Vegetation management (*trees, chipping of cut wood, roadside duff removal*) was completed by Pacific Slope recently.

Summer unpaved road grading: We are still waiting for Bob Lewis to start this work, even though it is no longer "summer." Included in this work is a lot of ditch-clearing that will make water drainage work better.

Drakes View Drive repaving: We sought a professional opinion from Craig Parmley and Dick Daly on a walk-through on July 23rd, and they believe we should proceed as quickly as possible to repave, because "the current road will deteriorate more and more rapidly." We are moving ahead with plans to estimate the cost, provide information to all the neighbors, hold an election to approve a continued road assessment, and to find a contractor to perform the work. More information will be provided at the January IRA general meeting.



Dust amelioration on unpaved roads: We abandoned this work because the summer road work did not take place as scheduled. We'll try again next year.

New/replacement mirrors: PG&E removed all road mirrors that were attached to utility poles (on DVD and Sunnyside); PRERAB has purchased three new, larger mirrors, and we will begin placing them and the old ones, but this time on new posts that we install ourselves.

If you have questions or comments about the roads, please contact any of the members of PRERAB listed on the [IRA/PRERAB website](http://www.IRA/PRERAB.org).

RULES OF OUR ROADS PLEASE FOLLOW THEM

Use of Limantour Fire Road/Emergency Exit

The Park asks that the Limantour fire road is only to be used for emergencies such as fire, flood, and earthquake. Please obey this rule.

Slow Down and Be Safe and Courteous

IRA Board members hear frequent complaints about unsafe drivers. Ask your guests, renters, and service workers to exercise caution on our roads, maintain safe speeds, yield the right of way to oncoming traffic, and keep the dust down on the unpaved roads.

And please always respect and yield to walkers.

FIRE OR OTHER EMERGENCY? MAKE SURE YOU KNOW YOUR NEIGHBORHOOD LIAISON

In partnership with the Marin County Disaster Council, members of Paradise Ranch Estates (PRE) are part of an emergency system that can assess injuries and damage in the event of an emergency that bypasses normal emergency response. **When phones are down or overwhelmed, volunteer members of our community are trained with radios to get necessary emergency information to emergency personnel.** PRE is divided into areas to which neighborhood liaisons are assigned.

A list of liaisons can be found [here](#).

Volunteer emergency liaisons are always needed. Please contact Stephen Bowers if you would like to volunteer for this important job. His email is srbowers@horizoncable.com



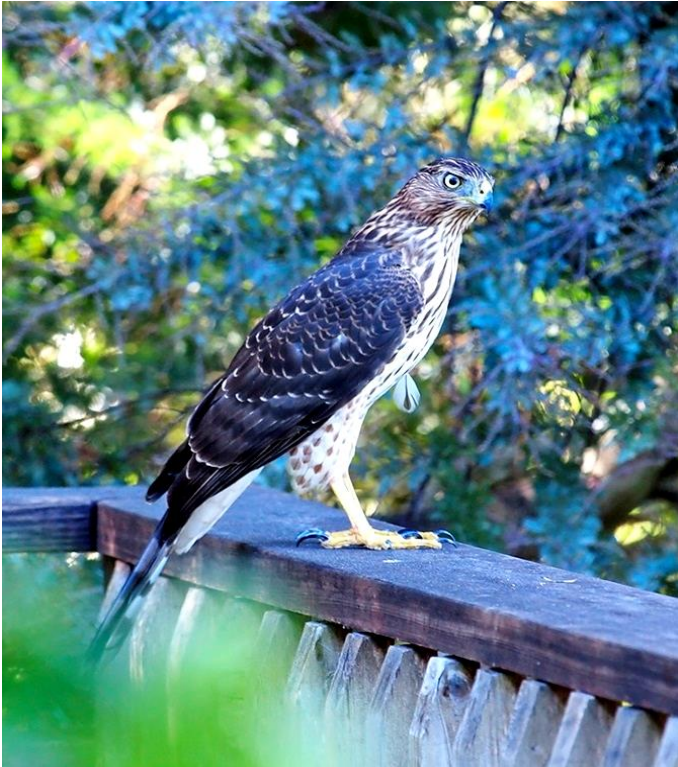
DISASTER FYI: EMERGENCY ALERTS, LANDLINES AND CELLPHONE SYSTEM

The Marin County Sheriff's Department has a robo-call system in place that can send a message to all land lines, listed or not, in any specific area, with a tailored message reporting emergency information. If you are not at home a message will be left. They claim they could isolate Paradise Ranch Estates and leave a message to evacuate or provide any information they deem necessary. They also say they can automatically tailor a message to an area based upon the location of a 911 call, or more likely multiple 911 calls, and impart the necessary information in the absence of a request from the local Fire Department or Sheriff.

If you do not have a land line, or would like to receive emergency messages when you are away or at work, you can go to www.alertmarin.org and sign up to have your cell number or VoIP registered to automatically receive any emergency call, text, or email.

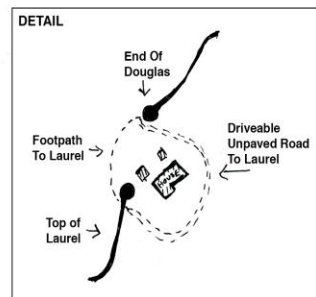
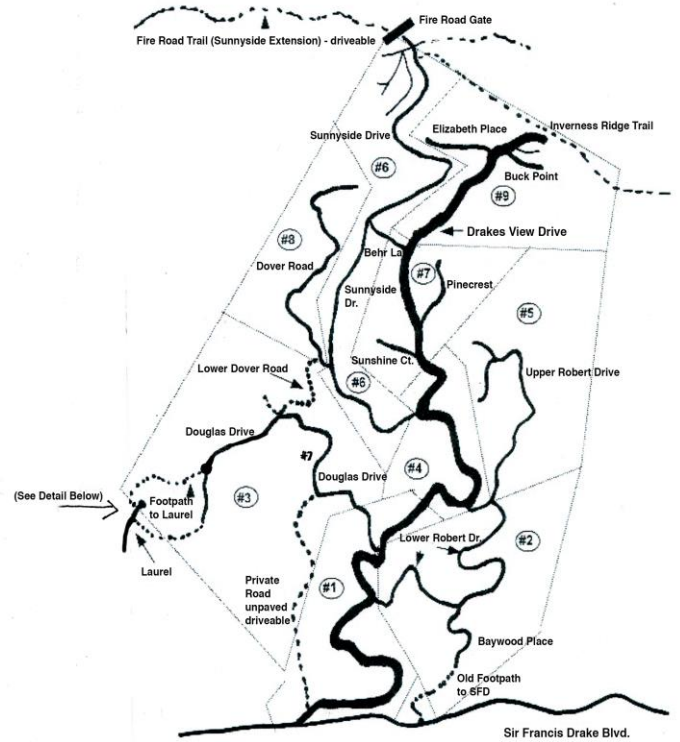
Whether these robo-calls would come in a timely manner is anyone's guess. That is why our neighborhood liaison program is so important.

Remember, if you hear the siren sounding continuously, and it is not the first Saturday of the month at noon, it means that you should evacuate immediately!



Cooper's Hawk. The Stetsons' New Pet. Ed Stetson

PARADISE RANCH ESTATES
SHOWING NEIGHBORHOOD LIAISON TERRITORIES (#) AND ESCAPE ROUTES



Inverness Ridge Association

Emergency numbers

Police, Fire, Med: 911
PG&E: (800) 743-5000

Non-emergency numbers

PRS Fire: (415) 473-6717
PRS Sheriff: (415) 663-1151
CHP Info: (415) 924-1100
PG&E Info: (800) 743-5002
MCFD HQ: (415) 499-6717
PRNS Police: (415) 464-5170
NMWD: (415) 897-4133
Kaiser Hosp: (415) 444-2000
Marin Gen. Hosp: (415) 925-7000
PRNS Info: (415) 464-5100

GATE LOCK COMBO #0911

**The Green Bridge:
Things May Work Out After All**
David Wilson

The intersection of Sir Francis Drake Boulevard and Highway #1, and the adjacent bridge across Lagunitas Creek, are a critical choke point between PRE homes and the outside world. Point Reyes Station is the only commercial center within miles, and we depend on open access to and from town for critical supplies and emergency services. We well remember 1995, when hundreds fled the Vision fire via the only route available.

There are also the 2.5 million+ outsiders who visit local attractions every year. Nearly all of them cross the bridge and intersection to get provisions and go to beaches, the lighthouse, trails, and so on.

Some time ago, Caltrans proposed a 3-5 year project to replace the bridge with one that is more earthquake-safe. That was fine, but the problem was what to do about those millions of vehicles in the meantime. How exactly do you maintain critical public access, and protect a delicate streamside ecology, while demolishing the old structure and building the new?

Caltrans asked for public input. IRA and lots of others responded, stressing what should have been obvious:

- Given the delicate environment and the critical need for uninterrupted access, Caltrans should favor the least disruptive solution to the earthquake issue. The perfect should not be the enemy of the good.
- The survival of a healthy business community is also important. Three or five years of backups would result in people changing shopping patterns, and could cripple many local enterprises.

Whether the Green Bridge is retrofitted or replaced, we need continuous two way access to/from Point Reyes Station during the project.

Busy hour backups are already difficult. A single lane controlled by guys holding flags just won't work.

The deadline for public comments was June 21. Caltrans appears to have paid attention. At an October 22, public meeting, it became clear that while a retrofit was off the table, other mitigating alternatives were being seriously considered. These included:

- Leaving the Green Bridge in place during on site construction of a parallel bridge. The old structure would be removed only when the new one is ready for use.
- Minimizing environmental impacts by assembling key sections of the new structure off site, bringing them in at the end of the process to replace the old structure, w2hich would remain in service in the meantime.

Bureaucracies being what they are, there are lots of studies and plans yet to come, and it will be some time (perhaps years) before ground is actually broken. But for now, it seems that the public has won a permanent place at the table, and is being heard. Learn more about the Green Bridge discussion at the [WMC website](#).

**WOULD YOU LIKE A COPY OF THE IRA
ROSTER TO STAY IN TOUCH WITH YOUR
NEIGHBORS?**

People have asked how to obtain an address and telephone list for IRA members. *It's as simple as contacting Bob Lundstrom by email.* robertlundstrom@horizoncable.com

The list of course cannot be used for any commercial or solicitation purposes. Board members do their best to keep these lists up-to-date. **We welcome any contact information on new neighbors, or if your information has changed. Just let Bob know at the email above.**